



# Freedom

Booms





## You Spoke, We Listened

### Higher performing healthcare teams, because we listened and learned from you

The Freedom boom system grew from watching and listening to healthcare teams. Skytron Booms exist to simplify clinical workspace.

#### Ease of access to what you need

- Focus on the patient and your team
- Equipment, gases, power, light, information, and protection where you need it

#### Increased safety

- Reduce trip hazards to help prevent staff falls and damage to equipment
- Easier cleaning helps lower infection rates
- Less stress and frustration on staff means reduced errors

#### Design the space the way your team needs it

- Greater capacity for cabling, power, and gases
- Flexibility to get equipment in that perfect spot
- Increased design/layout options
- Easier positioning of equipment
- Future proof to support surgeries which may not even exist today

#### Keep the focus on the patient

- Easier, intuitive equipment positioning with Skytron's Active Assist system, and 360 degree arm rotation
- Fewer distractions as drifting is eliminated by Active Assist and Sure Set friction systems
- Reduce equipment collisions and lower costs with the Five-Stack design and longer arm reach
- Keep what you don't need out of your way – Articulating Hubs help to 'park' equipment especially important in Hybrid applications



Easier to  
Move with  
Active Assist



360°  
Equipment  
Access



Smallest  
Rotational  
Footprint



## Flexibility to Position What You Need, Where You Need It

### Five-Stack Mount

- Industry's greatest number of arms (Five) from one mount
- Position the equipment carrier, multiple displays, and lights anywhere around the patient
- Eliminate rotational conflicts caused by side-by-side mounts
- Reduce costs with only one mounting structure

### Active Assist

- Grab anywhere and move easily
- No buttons to push and easy to position
- Less maintenance
- Stays where you put it

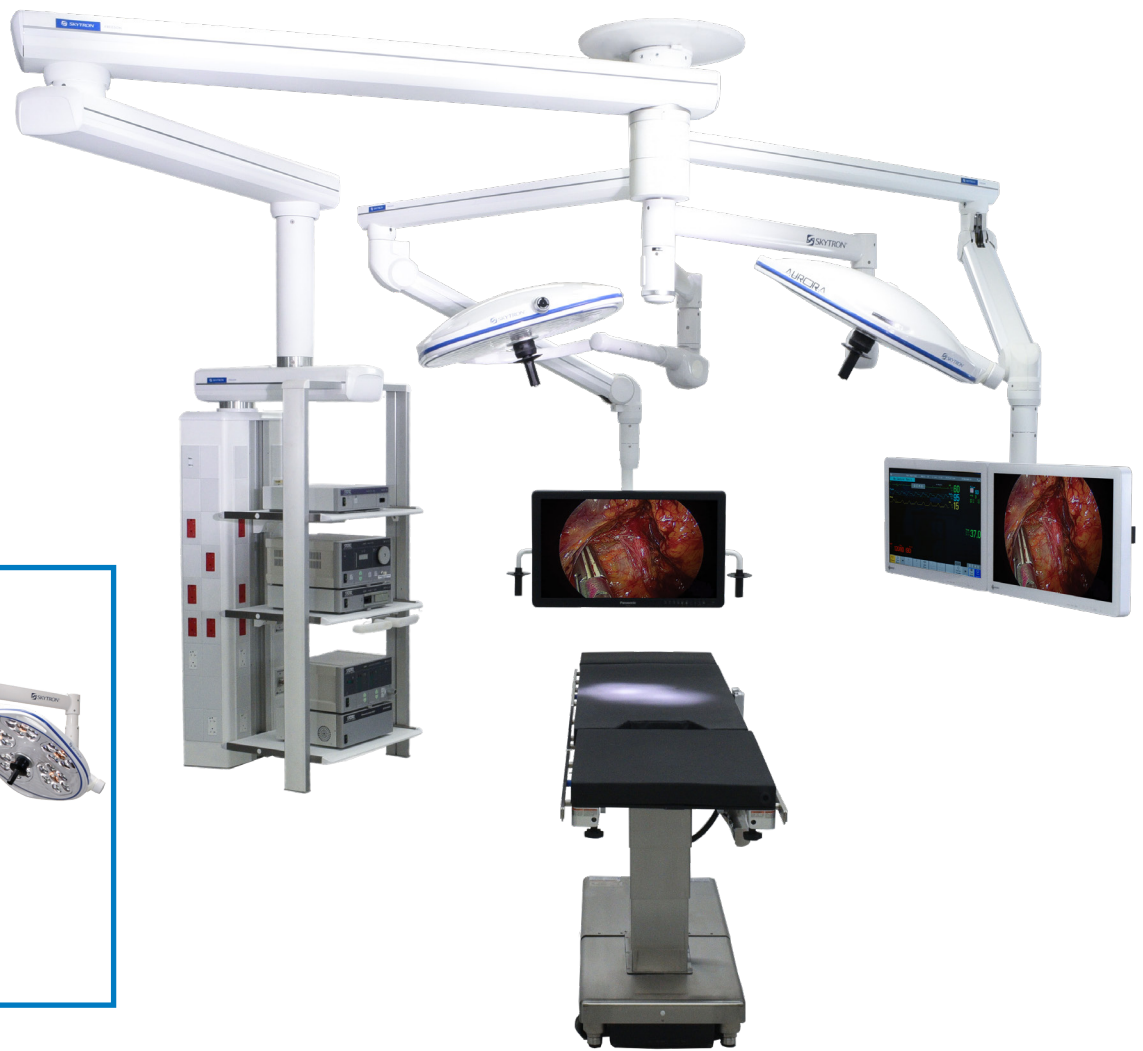
### Modular design to support your needs

- Ability to change to accommodate new demands
- Change components without removing the entire structure



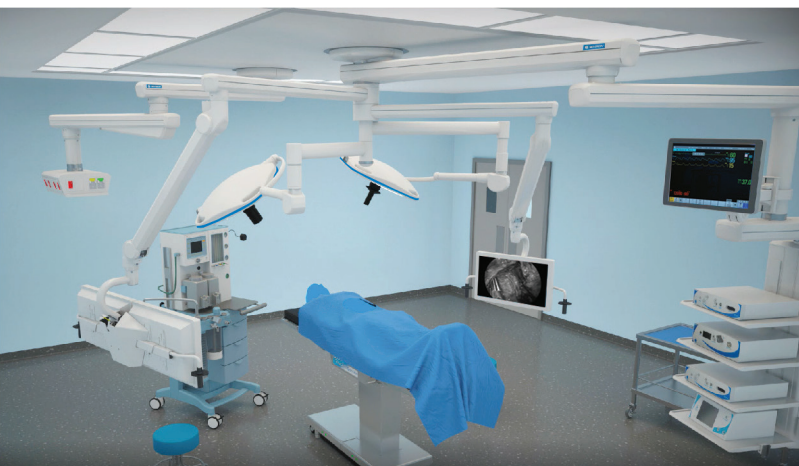


Four Stack Design



## Provides 360° Access to All of Your Equipment

Fewer mounts means intuitive use, fewer collisions and lower cost. The Skytron Five-Stack design, a first for the industry, supports up to five arms on a single mount.



### Five-Stack Features Include

- Equipment carrier, lights, and up to four flat-screen displays can be positioned anywhere around the patient
- First arm provides equipment carrier
- Second arm can provide a secondary power/gas source or flat-screen displays or x-ray shield
- Third arm provides flat screen displays or x-ray shield (with the five-arm system)
- Fourth and fifth arms can be surgical lights centered over the patient providing the easiest positioning around the surgical site

Using a single mounting structure, Freedom offers unconstrained arm movement in an Intensive Care Unit. All boom arms can park equipment anywhere in the room when not in use to truly open up the space.



Freedom opens up Operating Rooms and frees them of extra clutter. Utilizing a single mount simplifies installation and cuts down on extra construction costs while still offering all of the utilities and equipment needed for any procedure.

## Excellent Access and Patient Positioning Flexibility in the ICU

With Skytron's exclusive Five-Stack design, a single mount provides 360°+ access to equipment and utilities. An ideal configuration for intensive care units, this solution provides comprehensive coverage even when the patient's bed is pulled out or turned within the room.

### Five-Stack Highlights for the ICU

- Only one mounting structure required, minimizing any conflict in the ceiling with patient lift systems
- Both equipment carriers achieve head-to-foot coverage on either side of the patient
- Both upper and lower arms provide an equipment/utility carrier and optional flat-screen display or patient vitals monitor
- Potential to adjust position of the bed according to healing requirements, without sacrificing equipment and utility access
- Ability to add either an exam or procedure lights from the same single mount
- Ample room to provide up to 24 gases for the most demanding Intensive Care Units





## More Usable Space and Fewer Collisions

Center-aligned carrier rotation is designed to use 50% less space. This space saving carrier combined with a four or Five-Stack design provides comprehensive, shoulder-to-shoulder coverage.



Others



- Front shelf supports are optional and can be added or removed in the field

- Cantilever-type carrier

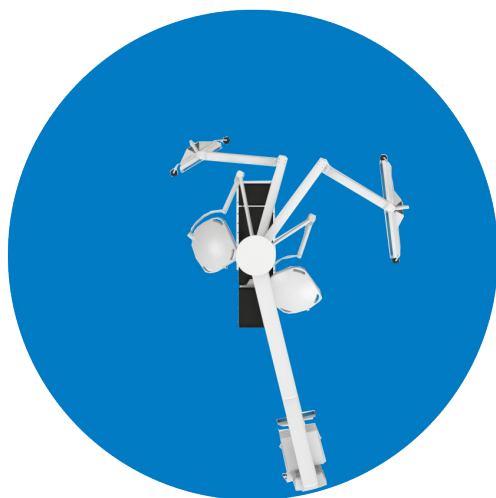


9 Feet, 7 Inches

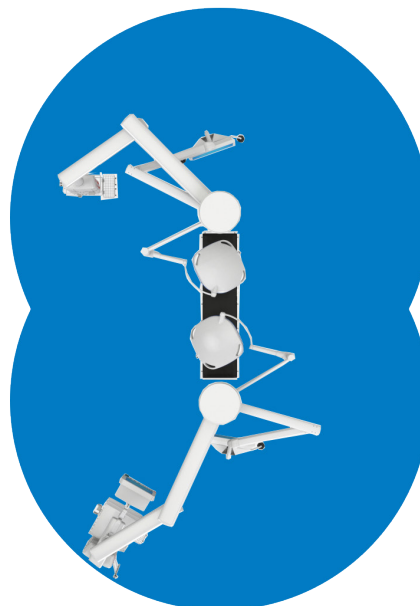
## Reach for a Better Design

Now featuring arm lengths up to 9' 7" the Freedom boom allows equipment to be positioned anywhere within a 19' diameter (283.5 sq ft) of the mounting structure. A longer reach also means a Skytron boom can easily work around other equipment such as patient lifts or imaging systems.

Center Mount



6/12 Mount





General OR



ICU



Hybrid Room



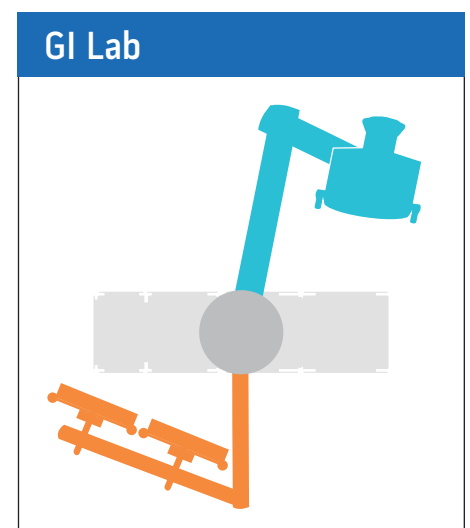
GI Lab

## Expert Design and Planning Support

Skytron design and planning experts will work with you on a custom solution designed to support your team. From extended arms for the hybrid operating room to flexible carrier coverage in the emergency room, Skytron has more options for any budget or specialty.

### Find a solution for every environment or specialty

- General Operating Room
- Hybrid Operating Room
- C-Section Suite
- Cath Lab
- Intensive Care Unit
- Emergency Department
- GI Lab







#### Minimal Footprint

Reduces collisions by aligning carriers with central rotation.



#### Future Proof

Extensive cable throughput allows plenty of room for today's needs and can also expand to accommodate future requirements.



#### Customizable to Clinical Needs

A full menu of accessories allow each configuration to be customized according to clinical requirements.



#### Protects Critical Equipment

Field configurable protective support rails on center aligned carriers prevent equipment damage.



#### Secure

A sealed plate separates all gas and electrical internal connections on carriers.



#### Safe

All boom components, even accessories and shelves are safety tested.

## Peace of Mind

Known for reliable equipment with a lower lifetime cost of ownership, Skytron delivers healthcare providers the assurance that they need. Freedom booms are constructed for utmost reliability and durability even in the most demanding clinical environments.

"Skytron booms offer us the greatest flexibility and performance of any ceiling-mounted boom designs we have ever tried. They are easy to operate, have no drift and allow us to seamlessly and easily add whatever equipment is necessary."

- Matthew Meyer, Equipment Planner, Spectrum Health Systems



## Create Safe, Efficient, and Flexible Environments

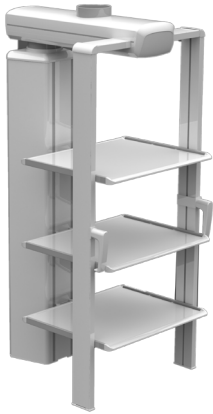
Skytron offers committed support to Architects, Planners and Design teams. From project management to state-of-the-art rendering tools, Skytron streamlines the planning process and provides timely, knowledgeable expertise. This expertise builds safer, more efficient and “future-proof” environments lowering the lifetime costs of your room.

### Turn any idea into reality with advanced planning tools such as:

- OR Concept Guide
- Project and Planning Guide
- Online Portal for Architects and Planners
- PowerTrak 3D Room Builder
- Clinical Immersion

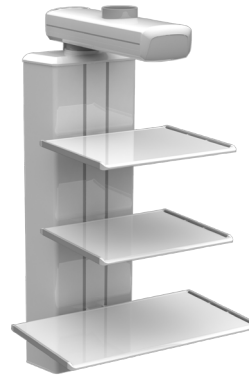
# Freedom Carrier Configurations

Freedom offers many configurations to support your specific equipment and utility needs not only today but with ample space for future expansion.



## 4CMC/4CMW Series with front supports

- Three-point rail design
- Center-aligned shelves
- 110 lb capacity per shelf
- 37" & 49" heights
- 17", 22" or 32" shelf widths



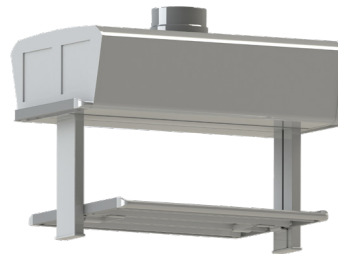
## 4CMC/4CMW Series

- Open design
- Center-aligned shelves
- 77 lb capacity per shelf
- 37" & 49" heights
- 17", 22" or 32" shelf widths



## 4VBC/4VBW Series

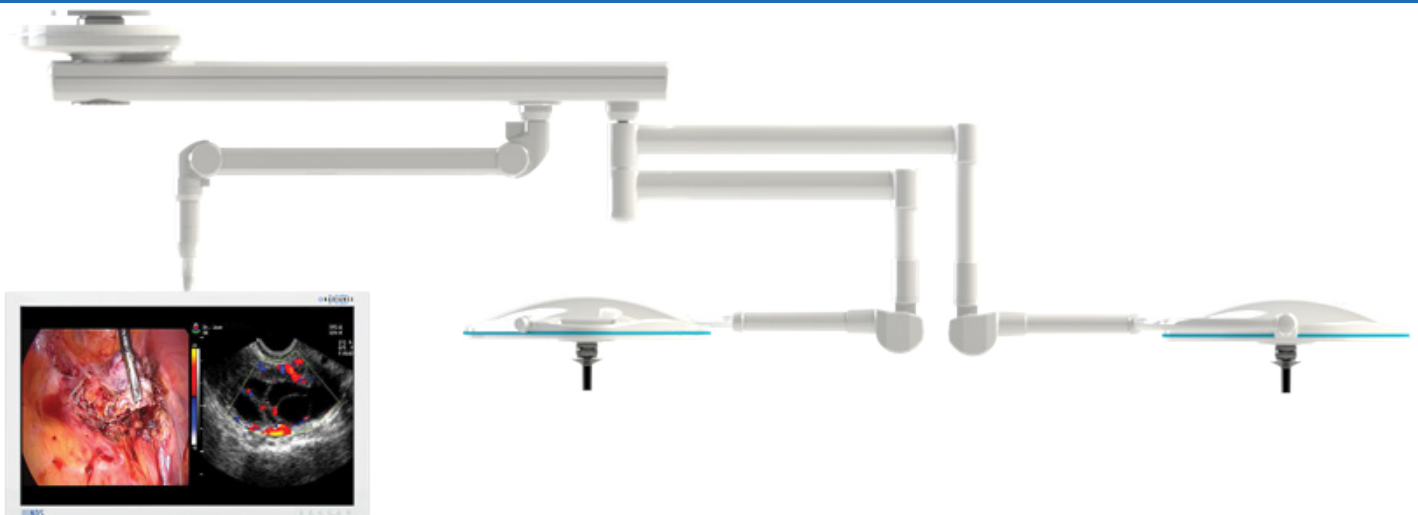
- Open design
- Cantilevered shelves
- 77 lb capacity per shelf
- 37" & 49" heights
- 17", 22" or 32" shelf widths



## 4UBW Series

- Horizontal utility box
- Under-mount shelf
- 77 lb shelf capacity
- 8" height
- 22" shelf width

## Exclusive Articulating Hub is Perfect for Compact Spaces



Freedom Booms offer more versatility than the competition. With the ability to offer an articulating hub, more products can be mounted from a single arm which works perfectly in areas with tight spaces or when you need to store items out of the way when they are not in use like in a Hybrid Room.

# Skytron's Solutions



## Sterile Processing

Processing Sinks and Stainless Offerings  
Washers, Ultrasonics, and Cart Washers  
Prep & Pack Tables & Sterilizers



## Clinical

Surgical Tables  
Booms & Lights  
Full Offering of Stainless Products



## Architectural & Environmental

Modular Walls  
Custom Window and Door Offering  
UVC Disinfection Products



## Clinical Business Intelligence

Video Integration  
Asset Tracking & Supply Chain Solutions  
Surgical Displays

Skytron provides safe and efficient healthcare solutions delivered through a local representative network that values long-term relationships and comprehensive service. Focused on providing the highest quality solutions while delivering the lowest cost of ownership, we prioritize transparency and accountability in our actions. **To learn more, visit our website at [www.skytron.com](http://www.skytron.com)**



5085 Corporate Exchange Blvd. SE  
Grand Rapids, MI 49512  
1.800.SKYTRON (759-8766)  
email: [info@skytron.com](mailto:info@skytron.com)  
[www.skytron.com](http://www.skytron.com)



REV1 09-22  
PN L2-010-205